

HIGHLIGHTS OF THE ATTACHED ANALYSES OF THE IMPORTS AND EXPORTS OF DAIRY PRODUCTS UP TO **MARCH 2020**

- *The total mass of imports of dairy products in 2019, was 10.0 percent higher than in 2018. The increase from 2018 to 2019, was due to the increase in imports of three of the six categories of dairy products.*
- *The estimated total mass of imports of dairy products in 2020, is 47.6 percent lower than in 2019. The decrease from 2019 to 2020, is due to the decrease in imports of three of the six categories of dairy products.*
- *The average f.o.b. import prices in 2020 (January to March), of five of the six different categories of dairy products, are higher than in 2019.*
- *The total mass of exports of dairy products in 2019, is 0.8 percent lower than in 2018. The decrease from 2018 to 2019, is due to the decrease in exports of four of the six categories of dairy products.*
- *The estimated total mass of exports of dairy products in 2020, is 4.6 percent higher than in 2019. The increase from 2019 to 2020, is due to the increase in exports of four of the six categories of dairy products.*
- *The average f.o.b. export prices in 2020 (January to March), of three of the six different categories of dairy products, are higher than in 2019.*
- *The estimated total mass of imports and exports in 2020, shows that South Africa is a nett importer of concentrated milk (04.02), whey (04.04), butter (04.05) and cheese (04.06) and a nett exporter of milk and cream (04.01) and buttermilk and yoghurt (04.03).*
- *Graphs reflecting the mass of imports and exports per month of each of the six categories of dairy products, are shown in Annexure B.*
- *The total mass of sales by South Africa to the other members of the Southern African Customs Union (Botswana, Namibia, Lesotho and Swaziland), in 2020 (January to March), of each of the six categories of dairy products, was higher than the mass of South African exports of the dairy products in the same period.*
- *The exposure to foreign competition (that is imports plus exports) in 2019, was higher than 2018, but lower than 2017. The estimated exposure in 2020, is the lowest in the 8 years from 2012 to 2019.*

Note:

- *The estimated total import quantities in 2020, were calculated on the assumption that the levels of import in the first three months of 2020, will be maintained during the rest of 2020.*
- *Estimates regarding future imports based on historic import figures should be viewed with caution as the pattern of imports (distribution per month of total import and export during a year) in different years differ meaningfully.*



Imports and exports of dairy products up to March 2020

This report was compiled by the Office of SAMPRO and forms part of the Industry Information Project of SAMPRO. The purpose of the project is to make market signals available to members and other interested parties, which is a pre-requisite for effective competition, as envisaged by the Competition Act.

All reports compiled by the Office of SAMPRO and all activities of the Industry Information Project of SAMPRO, are designed and implemented in accordance with the Competition Act and independently from a commercial interest of any and all the members of SAMPRO.

INTRODUCTION

1. The imports and exports figures of dairy products from January to March 2020, were recently released by SARS.
2. In this document, a brief analysis of imports and exports is provided per tariff heading.
3. The pattern of imports and exports within each year (the distribution per month of the total imports and exports of the year) differs significantly from year to year as described in Annexure B. As a result, estimates of future imports and exports, based on historical figures as referred to in the previous paragraph, should be viewed with caution.

IMPORTS

4. The indices of the total mass of imports in the years 2012 to 2019 and the estimated imports in 2020, are indicated in Table 1. (The mass of imports is indicated in Annexure A).

Table 1: Indices of the total mass of imports per tariff heading (2002=100)

Heading	Description	2012	2013	2014	2015	2016	2017	2018	2019	2020 Est
04.01	Milk and cream, unsweetened	7 306	2 046	3 352	12 877	9 213	18 779	8 457	8 829	116
04.02	Milk, concentrated	120	65	89	114	95	144	135	163	193
04.03	Buttermilk powder, yoghurt	243	180	237	301	288	356	404	394	586
04.04	Whey, whey powder, etc	117	141	120	118	90	97	152	275	157
04.05	Butter, butter spreads and butter oil	413	212	140	347	362	361	613	291	490
04.06	Cheese and curd	419	269	312	409	426	395	367	311	287
TOTAL		240	145	163	282	236	339	279	307	161

5. Table 1, indicates that:

- The total mass of imports in 2018, was 17.7 percent lower than in 2017. The decrease from 2017 to 2018, was due to the decrease in imports of three of the six categories of dairy products;
- The total mass of imports in 2019, was 10.0 percent higher than in 2018. The increase from 2018 to 2019, was due to the increase in imports of three of the six categories of dairy products; and
- The estimated total mass of imports in 2020, is 47.6 percent lower than in 2019. The decrease from 2019 to 2020, is due to the decrease in imports of three of the six categories of dairy products.

6. In Table 2, the total mass of imports in January to March 2020, is compared with the mass of imports in January to March 2019.

Table 2: Total mass of Imports from January to March 2020 and January to March 2019

Heading	Description	A 2020 Kg	B 2019 Kg	A as % of B
04.01	Milk and cream, unsweetened	60 707	104 535	58.1
04.02	Milk, concentrated	5 315 044	2 003 743	265.3
04.03	Buttermilk powder, yogurt	1 293 219	1 161 366	111.4
04.04	Whey, whey powder, etc	3 094 609	3 282 116	94.3
04.05	Butter, butter spreads and butter oil	1 811 469	1 821 971	99.4
04.06	Cheese and curd	2 236 441	2 190 939	102.1
Total		13 811 488	10 564 671	130.7

7. The estimated total mass of imports of concentrated milk (04.02), buttermilk powder and yoghurt (04.03) and cheese and curd (04.06) are higher in the period January to March 2020, than in the same period of the previous year.
8. Table 3, indicates the indices of the average f.o.b. import prices in the years 2012 to 2019 and the average import prices for the period January to March 2020.

Table 3: Indices of the average f.o.b. import prices per tariff heading (2002=100)

Heading	Description	2012	2013	2014	2015	2016	2017	2018	2019	2020 Jan - Mar
04.01	Milk and cream, unsweetened	44	47	68	61	59	61	64	71	272
04.02	Milk, concentrated	206	291	326	237	252	247	236	279	322
04.03	Buttermilk powder, yoghurt	160	247	292	195	177	197	163	224	262
04.04	Whey, whey powder, etc	299	367	447	411	371	401	376	331	378
04.05	Butter, butter spreads and butter oil	231	270	370	304	361	530	560	540	522
04.06	Cheese and curd	134	173	206	183	191	208	210	233	235

9. Table 3, indicates that:
- The average import prices of two of the six categories of dairy products in 2019, were lower than in 2018: and
 - The average import price of one of the six categories of dairy products in 2020 (January to March), is lower than in 2019.

10. Table 4, indicates the average f.o.b. prices of the imported dairy products in the years 2012 to 2019 and the average import prices for the period January to March 2020.

Table 4: Average f.o.b. import prices per tariff heading

Heading	Description	2012 R/kg	2013 R/kg	2014 R/kg	2015 R/kg	2016 R/kg	2017 R/kg	2018 R/kg	2019 R/kg	2020 R/kg Jan-Mar
04.01	Milk and cream, unsweetened	5.55	5.95	8.50	7.65	7.44	7.65	8.00	8.95	34.15
04.02	Milk, concentrated	26.85	37.95	42.63	30.92	32.94	32.31	30.84	36.49	42.06
04.03	Buttermilk powder, yoghurt	23.03	35.55	42.09	28.06	25.56	28.39	23.51	32.27	37.79
04.04	Whey, whey powder, etc	23.33	28.62	34.82	31.98	28.90	31.24	29.33	25.77	29.45
04.05	Butter, butter spreads and butter oil	29.99	35.05	48.14	39.56	46.88	68.89	72.84	70.17	67.80
04.06	Cheese and curd	40.02	51.90	61.70	54.94	57.22	62.19	62.92	69.85	70.38

11. The average import price of one of the six different categories of dairy products decreased from 2019 to January to March 2020, as follows:

- 04.05 3.4 percent; and

12. The average import prices of five of the six different categories of dairy products increased from 2019 to January to March 2020, as follows:

- 04.01 281.4 percent;
- 04.02 15.3 percent;
- 04.03 17.3 percent;
- 04.04 14.3 percent; and
- 04.06 0.8 percent.

13. Please note that the average price in January to March 2020, for the products that were imported under tariff heading 04.01, was not that of UHT milk, but value-added products classifiable under headings 0401.50 and 0401.60 with a fat content between 6 to 10 percent butterfat and products with a butterfat content higher than 10 percent.

EXPORTS

14. The indices of the total mass of exports in the years 2012 to 2019 and the estimated imports in 2020, are indicated in Table 5. (The mass of exports is indicated in Annexure A).

Table 5: Indices of the total mass of exports per tariff heading (2002=100)

Heading	Description	2012	2013	2014	2015	2016	2017	2018	2019	2020 Est
04.01	Milk and cream, unsweetened	219	227	256	227	178	141	133	159	171
04.02	Milk, concentrated	47	109	60	45	38	77	67	56	54
04.03	Buttermilk powder, yoghurt	1 332	2 012	2 348	1 660	1 330	1 140	1 318	1 131	1 017
04.04	Whey, whey powder, etc	335	598	453	1 025	925	964	168	181	228
04.05	Butter, butter spreads and butter oil	68	77	122	98	88	71	81	79	111
04.06	Cheese and curd	53	64	76	89	88	79	92	84	110
TOTAL		153	205	207	179	146	142	132	131	137

15. Table 5, indicates that:

- The total mass of exports in 2018, was 7.0 percent lower than in 2017. The decrease was due to the decrease in exports of three of the six categories of dairy products;
- The total mass of exports in 2019, was 0.8 percent lower than in 2018. The decrease was due to the decrease in exports of four of the six categories of dairy products; and
- The estimated total mass of exports in 2020, is 4.5 percent higher than in 2019. The increase is due to the increases in exports of four of the six categories of dairy products.

16. In Table 6, the total mass of exports in January to March 2020, is compared with the mass of exports in January to March 2019.

Table 6: Total mass of exports from January to March 2020 and January to March 2019

Heading	Description	A 2020 Kg	B 2019 Kg	A as % van B
04.01	Milk and cream, unsweetened	5 485 597	4 942 422	111.0
04.02	Milk, concentrated	1 896 159	1 916 321	98.9
04.03	Buttermilk powder, yoghurt	2 465 037	2 418 761	101.9
04.04	Whey, whey powder. etc	234 853	116 173	202.2
04.05	Butter, butter spreads and butter oil	424 577	242 083	175.4
04.06	Cheese and curd	1 253 770	811 514	154.5
Total		11 759 994	10 447 274	112.6

17. Table 6, indicates that the estimated total mass of exports of five of the six categories of dairy products were higher in the period January to March 2020, than in the same period in 2019.
18. Table 7, indicates the indices of the average f.o.b. prices from 2012 to 2019 and the average f.o.b. prices for the period January to March 2020, of the exports of the six categories of dairy products.

Table 7: Indices of average f.o.b. export prices per tariff heading (2000 =100)

Heading	Description	2012	2013	2014	2015	2016	2017	2018	2019	2020 Jan - Mar
04.01	Milk and cream, unsweetened	201	205	227	247	244	262	269	271	284
04.02	Milk, concentrated	145	116	179	184	220	247	217	220	215
04.03	Buttermilk powder, yoghurt	142	149	167	157	178	311	155	176	169
04.04	Whey, whey powder, etc	119	196	188	133	322	168	236	228	300
04.05	Butter, butter spreads and butter oil	244	242	266	268	325	395	443	375	477
04.06	Cheese and curd	169	178	193	190	218	255	222	235	227

19. Table 7, indicates that:

- The average prices of exports of three of the six categories of dairy products in 2018, were higher than in 2017;
- The average prices of exports of four of the six categories of dairy products in 2019, were higher than in 2018; and
- The average prices of exports of three of the six categories of dairy products in 2020 (January to March), were higher than in 2019.

20. The average free-on-board f.o.b. export prices from 2012 to 2019 and the average import prices for the period January to March 2020, are indicated in Table 8.

Table 8: Average f.o.b. export prices per tariff heading

Heading	Description	2012 R/kg	2013 R/kg	2014 R/kg	2015 R/kg	2016 R/kg	2017 R/kg	2018 R/kg	2019 R/kg	2020 R/kg Jan- Mar
04.01	Milk and cream, unsweetened	8.39	8.55	9.45	10.30	10.16	10.93	11.20	11.30	11.85
04.02	Milk, concentrated	24.37	19.49	30.05	30.97	37.00	41.51	36.56	36.97	36.21
04.03	Buttermilk powder, yoghurt	16.97	17.76	19.97	18.76	21.27	37.12	18.45	21.02	20.22
04.04	Whey, whey powder, etc	9.43	15.55	14.85	10.51	25.46	13.27	18.71	18.03	23.73
04.05	Butter, butter spreads and butter oil	37.06	36.75	40.37	40.66	49.40	59.94	67.27	56.89	72.40
04.06	Cheese and curd	40.44	42.47	46.11	45.50	52.00	60.86	53.15	56.25	54.17

21. The average export prices of three of the six different categories of dairy products increased from 2019 to January to March 2020, as follows:
- 04.01 4.9 percent;
 - 04.04 31.6 percent; and
 - 04.05 27.2 percent.
22. The average export prices of three of the six different categories of dairy products decreased from 2019 to January to March 2020, as follows:
- 04.02 2.0 percent;
 - 04.03 3.8 percent; and
 - 04.06 3.7 percent.

RATIO BETWEEN IMPORTS AND EXPORTS

23. The total mass of imports as a percentage of the total mass of exports of dairy products by South Africa, is a highly aggregated indication of the industry's international competitiveness. The ratios between the mass of imports and exports of the six categories of dairy products from 2012 to 2019 and figures in respect of January to March 2020, are indicated in Table 9.

Table 9: Total mass of imports as a percentage of the total mass of exports

Heading	Description	2012	2013	2014	2015	2016	2017	2018	2019	2020 Jan-Mar
04.01	Milk and cream, unsweetened	54.3	14.7	21.4	92.5	84.3	217.1	103.7	90.2	1.1
04.02	Milk, concentrated	199.3	46.5	117.3	197.7	196.3	146.4	159.5	227.9	280.3
04.03	Buttermilk powder, yoghurt	16.6	8.2	9.2	16.5	19.7	28.4	27.9	31.7	52.5
04.04	Whey, whey powder, etc	669.5	452.7	507.4	221.3	185.9	192.9	1 741.3	2 917.9	1 317.7
04.05	Butter, butter spreads and butter oil	591.1	266.7	111.4	344.1	396.7	491.2	735.1	355.5	426.7
04.06	Cheese and curd	536.5	286.6	281.2	314.2	330.3	338.7	272.5	252.7	178.4
TOTAL		90.2	112.6	50.6	56.5	115.4	171.7	151.7	167.8	117.4

24. As indicated in Table 9:
- The ratio between the total mass of imports and exports in 2018, in respect of three of the six categories of dairy products, namely milk and cream (04.01), buttermilk and yogurt (04.03) and cheese and curd (04.06) were lower than in 2017;
 - The ratio between the total mass of imports and exports in 2019, in respect of three of the six categories of dairy products, namely milk and cream (04.01), butter (04.05) and cheese (04.06) were lower than in 2018; and

- The ratio between the estimated imports and exports in 2020, in respect of three of the six categories of dairy products, namely milk and cream (04.01), whey (04.04) and cheese (04.06) are lower than in 2019.

EXPOSURE OF THE SOUTH AFRICAN DAIRY INDUSTRY TO FOREIGN COMPETITION

25. The sum of the total mass of the imports and exports of dairy products by South Africa, is a highly aggregated indication of the exposure of the South African dairy industry to foreign competition, and this is indicated in Table 10.

Table 10: Mass of imports and exports (2002=100)

YEAR	IMPORTS		EXPORTS		IMPORTS PLUS EXPORTS	
	TON	INDEX	TON	INDEX	TON	INDEX
2002	24 617.40	100.0	34 328.20	100.0	58 945.60	100.0
2003	24 458.80	99.4	22 905.20	66.7	47 364.00	80.4
2004	18 289.50	74.3	23 508.10	68.5	41 797.60	70.9
2005	30 771.40	125.0	17 216.00	50.2	47 987.40	81.4
2006	30 878.60	125.4	26 543.30	77.3	57 421.90	97.4
2007	44 313.00	180.0	18 516.50	53.9	62 829.50	106.6
2008	34 009.40	138.2	42 781.00	124.6	76 790.40	130.3
2009	32 373.40	131.5	41 770.70	121.7	74 144.10	125.8
2010	35 061.20	142.4	33 950.60	98.9	69 011.80	117.1
2011	37 714.40	153.2	41 817.10	121.8	79 531.50	134.9
2012	59 012.55	239.7	52 500.96	152.9	111 513.49	189.2
2013	35 673.76	144.9	70 481.90	205.3	106 155.66	180.1
2014	40 199.03	163.3	71 098.95	207.1	111 297.99	188.8
2015	69 353.98	281.7	61 296.87	178.6	130 650.85	221.6
2016	58 000.35	235.6	50 247.54	146.4	108 247.89	183.6
2017	83 504.44	339.2	48 626.69	141.7	132 131.14	224.2
2018	68 652.58	278.9	45 257.49	131.8	113 910.08	193.2
2019	75 596.08	307.1	45 051.75	131.2	120 647.83	204.7
2020 Est	55 245.95	224.4	47 039.98	137.0	102 285.93	173.5

26. From Table 10, it is clear that the exposure to foreign competition of the South African dairy industry:
- Was in 2017, the highest in the years 2002 to 2018;
 - Was in 2019, higher than in 2018, but lower than 2017; and that
 - The estimated exposure in 2020, is the lowest in the 8 years from 2012 to 2019.

27. Table 11, indicates the mass of total sales to the Southern African Customs Union (SACU) member states, namely Botswana, Lesotho, Namibia and Swaziland (BLNS countries) in the period January to December 2019. Sales by South Africa to the other members of SACU, are not classified by SARS as exports.

Table 11: Mass of sales to the BLNS countries compared to exports outside of SACU in the period January to March 2020

Heading	Description	(A)	(B)	(A+B)=(C)	A
		Sales To BLNS	Exports to Countries Outside SACU	Sales to BLNS plus exports outside SACU	as % of C
		Kilogram			%
04.01	Milk and cream, unsweetened	17 945 838	5 485 597	23 431 435	76.6
04.02	Milk, concentrated	11 076 425	1 896 159	12 972 584	85.4
04.03	Buttermilk powder, yogurt	7 118 941	2 465 037	9 583 978	74.3
04.04	Whey, whey powder, etc	995 541	234 853	1 190 394	80.3
04.05	Butter, butter spreads and butter oil	281 722	424 577	706 299	39.9
04.06	Cheese and curd	1 329 411	1 253 770	2 583 182	51.5
Total		38 707 878	11 759 994	50 467 872	76.7

28. Table 11, indicates that:

- The mass of the total sales of dairy products by South Africa to the BLNS countries, exceeded the mass of exports. (Exports are sales to destinations outside SACU); and
- The mass of the sales by South Africa to members of SACU, of five of the six categories of dairy products, exceeded the mass of exports by South Africa.

MARIETJIE LE ROUX
DE WET JONKER
ALWYN P KRAAMWINKEL
20 June 2020

Table 1: Imports and Exports by heading in kg

Heading	Description	Imports	Exports	Imports	Exports	Imports	Exports
		2002 Kg	2002 Kg	2003 Kg	2003 Kg	2004 Kg	2004 Kg
04.01	Milk and cream, unsweetened	208 613	12 801 289	684 821	9 640 776	1 526 416	9 190 414
04.02	Milk, concentrated	11 018 625	14 039 210	6 703 019	7 452 953	3 067 368	5 972 199
04.03	Buttermilk powder, yoghurt	882 034	969 846	1 077 191	2 161 584	850 505	2 076 324
04.04	Whey, whey powder etc	7 906 468	412 723	6 271 924	268 045	6 777 606	2 628 212
04.05	Butter, butter spreads and butter oil	1 479 363	1 526 319	4 629 804	996 146	1 800 706	788 997
04.06	Cheese and curd	3 122 250	4 578 773	5 092 997	2 385 733	4 266 915	2 851 990
	Total	24 617 353	34 328 160	24 459 756	22 905 237	18 289 516	23 508 136

Heading	Description	Imports	Exports	Imports	Exports	Imports	Exports
		2005 Kg	2005 Kg	2006 Kg	2006 Kg	2007 Kg	2007 Kg
04.01	Milk and cream, unsweetened	2 105 485	8 666 131	4 943 877	12 559 045	13 858 507	7 277 746
04.02	Milk, concentrated	12 337 153	3 517 660	9 032 137	4 366 952	14 386 700	4 235 315
04.03	Buttermilk powder, yoghurt	1 689 886	2 969 313	1 561 696	4 980 518	1 611 115	3 904 306
04.04	Whey, whey powder, etc	8 091 601	137 326	7 514 344	2 339 330	5 711 984	1 239 684
04.05	Butter, butter spreads and butter oil	2 722 816	846 786	3 141 909	770 915	3 331 164	880 002
04.06	Cheese and curd	3 824 459	1 078 744	4 684 645	1 526 513	5 413 513	979 477
	Total	30 771 400	17 215 960	30 878 608	26 543 273	44 312 983	18 516 530

Heading	Description	Imports	Exports	Imports	Exports	Imports	Exports
		2008 Kg	2008 Kg	2009 Kg	2009 Kg	2010 Kg	2010 Kg
04.01	Milk and cream, unsweetened	12 799 205	19 293 810	10 902 048	21 292 977	11 118 947	17 451 437
04.02	Milk, concentrated	5 852 035	11 446 267	5 385 534	7 864 904	6 771 519	4 612 872
04.03	Buttermilk powder, yoghurt	669 432	5 743 800	1 380 614	5 709 480	1 378 705	4 527 147
04.04	Whey, whey powder, etc	7 539 920	3 298 052	6 259 760	3 852 586	7 267 982	3 805 172
04.05	Butter, butter spreads and butter oil	2 812 100	1 564 877	3 200 689	1 309 556	2 192 835	1 470 776
04.06	Cheese and curd	4 336 703	1 434 165	5 244 744	1 741 226	6 331 199	2 083 150
	Total	34 009 395	42 780 971	32 373 389	41 770 729	35 061 187	33 950 554

Heading	Description	Imports	Exports	Imports	Exports	Imports	Exports
		2011 Kg	2011 Kg	2012 Kg	2012 Kg	2013 Kg	2013 Kg
04.01	Milk and cream, unsweetened	8 324 364	20 801 621	15 240 656	28 077 665	4 267 449	29 074 468
04.02	Milk, concentrated	7 895 127	7 244 566	13 257 357	6 653 309	7 115 030	15 316 274
04.03	Buttermilk powder, yoghurt	2 131 189	9 215 883	2 146 004	12 913 857	1 590 917	19 517 880
04.04	Whey, whey powder, etc	9 445 819	1 255 978	9 266 509	1 384 114	11 165 088	2 466 431
04.05	Butter, butter spreads and butter oil	3 153 315	992 242	6 107 761	1 033 349	3 132 054	1 174 557
04.06	Cheese and curd	6 764 628	2 306 790	13 084 240	2 438 666	8 403 219	2 932 285
	Total	37 714 442	41 817 080	59 102 527	52 500 960	35 673 757	70 481 895

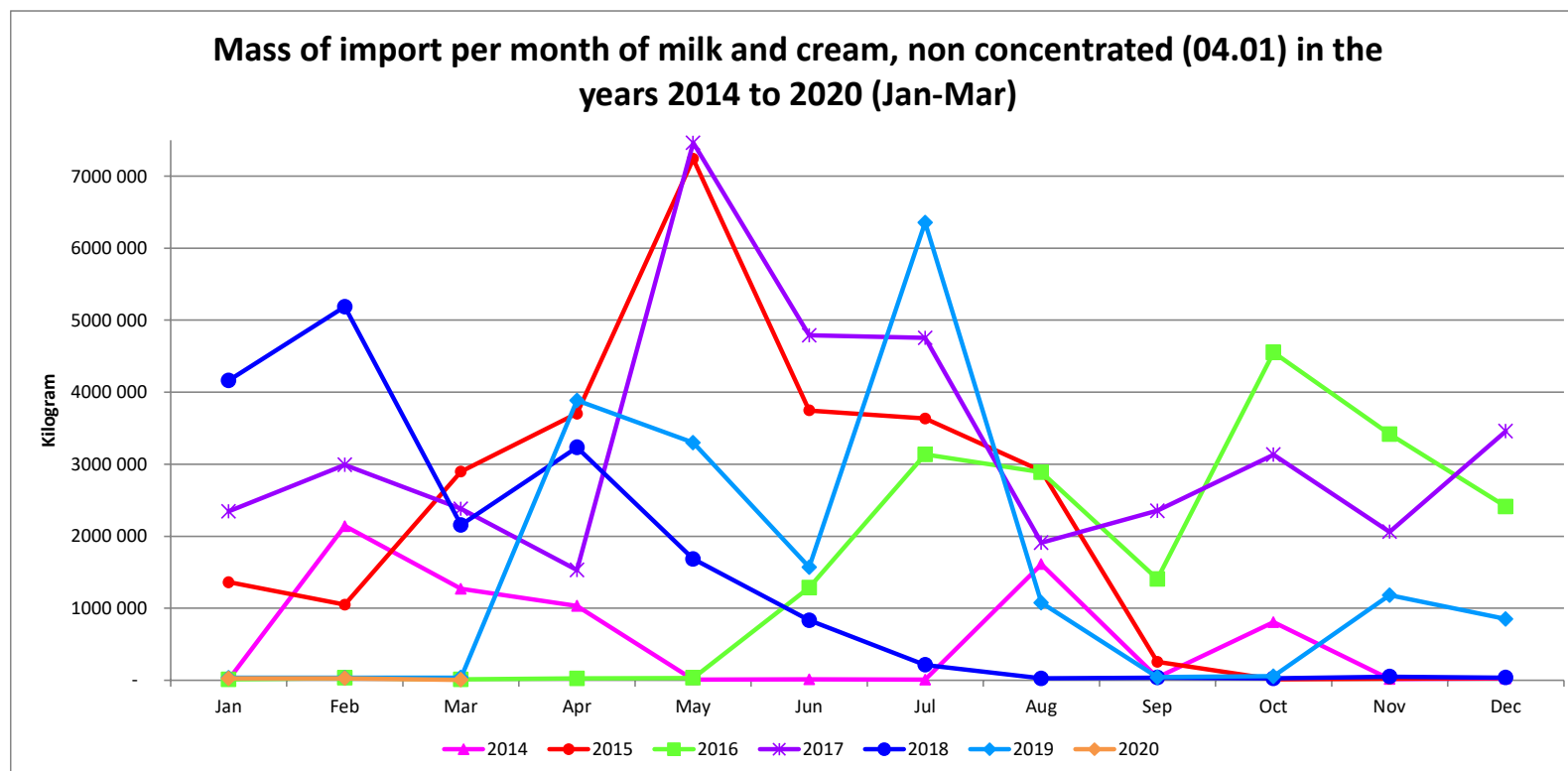
Heading	DESCRIPTION	Imports	Exports	Imports	Exports	Imports	Exports
		2014 Kg	2014 Kg	2015 Kg	2015 Kg	2016 Kg	2016 Kg
04.01	Milk and cream, unsweetened	6 992 447	32 751 503	26 863 360	29 051 149	19 219 616	22 804 187
04.02	Milk, concentrated	9 836 418	8 383 267	12 574 543	6 361 606	10 502 625	5 350 645
04.03	Buttermilk, yoghurt, etc	2 086 328	22 774 653	2 653 250	16 098 030	2 540 075	12 903 458
04.04	Whey, whey powder, etc	9 480 080	1 868 337	9 365 343	4 232 308	7 095 931	3 816 533
04.05	Butter, butter spreads and butter oil	2 071 983	1 860 197	5 131 861	1 491 368	5 356 852	1 350 229
04.06	Cheese and curd:	9 731 777	3 460 994	12 765 628	4 062 404	13 285 247	4 022 491
	Total	40 199 034	71 098 952	69 353 984	61 296 865	58 000 347	50 247 544

Heading	DESCRIPTION	Imports	Exports	Imports	Exports	Imports	Exports
		2017 Kg	2017 Kg	2018 Kg	2018 Kg	2019 Kg	2019 Kg
04.01	Milk and cream, unsweetened	39 175 443	18 044 769	17 642 842	17 009 995	18 417 754	20 412 096
04.02	Milk, concentrated	15 842 375	10 822 898	14 889 772	9 336 954	17 929 714	7 868 718
04.03	Buttermilk, yoghurt, etc	3 141 948	11 053 751	3 561 120	12 785 725	3 477 423	10 970 946
04.04	Whey, whey powder, etc	7 673 604	3 977 971	12 048 155	691 890	21 755 229	745 578
04.05	Butter, butter spreads and butter oil	5 343 309	1 087 716	9 064 150	1 232 997	4 302 967	1 210 490
04.06	Cheese and curd:	12 327 764	3 639 588	11 446 544	4 199 938	9 712 995	3 843 918
	Total	83 504 443	48 626 693	68 652 583	45 257 499	75 596 081	45 051 747

Heading	DESCRIPTION	Imports	Exports	Imports	Exports		
		2020 Est	2020 Est	Jan – Mar 2020	Jan-Mar 2020		
		Kg	Kg	Kg	Kg		
04.01	Milk and cream, unsweetened	242 826	21 942 388	60 707	5 485 597		
04.02	Milk, concentrated	21 260 176	7 584 637	5 315 044	1 896 159		
04.03	Buttermilk, yoghurt, etc	5 172 876	9 860 147	1 293 219	2 465 037		
04.04	Whey, whey powder, etc	12 378 435	939 413	3 094 609	234 853		
04.05	Butter, butter spreads and butter oil	7 245 876	1 698 308	1 811 469	424 577		
04.06	Cheese and curd:	8 945 763	5 015 081	2 236 441	1 253 770		
	Total	55 245 953	47 039 975	13 811 488	11 759 994		

MASS OF IMPORTS AND EXPORTS PER MONTH OF SELECTED DAIRY PRODUCTS BY SOUTH AFRICA¹⁾

Graph 1

**Table 1****Highest and lowest imports per month of milk and cream, non-concentrated (04.01) in the years 2014 to January to March 2020**

	Highest	Lowest
2014	February	July
2015	May	October
2016	June	January
2017	May	April
2018	February	August
2019	July	January
2020 (Jan-Mar)	February	March

1) Graphs prepared by the Office of SAMPRO on the basis of information obtained from SARS.

Graph 2

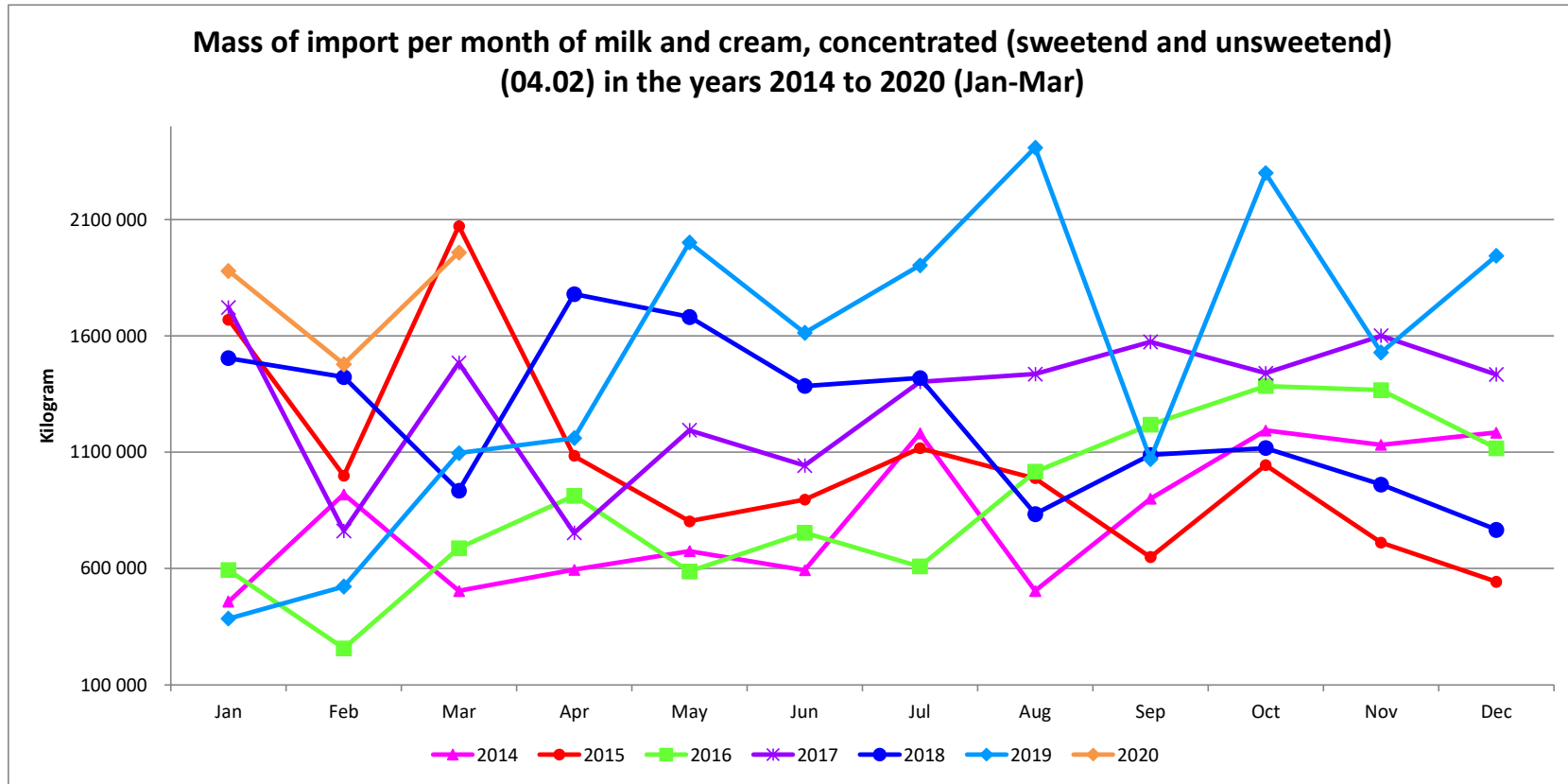


Table 2
Highest and lowest imports per month of milk and cream, concentrated (sweetend and unsweetend) (04.02) in the years 2014 to January to March 2020

	Highest	Lowest
2014	October	January
2015	March	December
2016	October	February
2017	January	April
2018	April	December
2019	August	January
2020 (Jan-Mar)	March	February

Graph 3

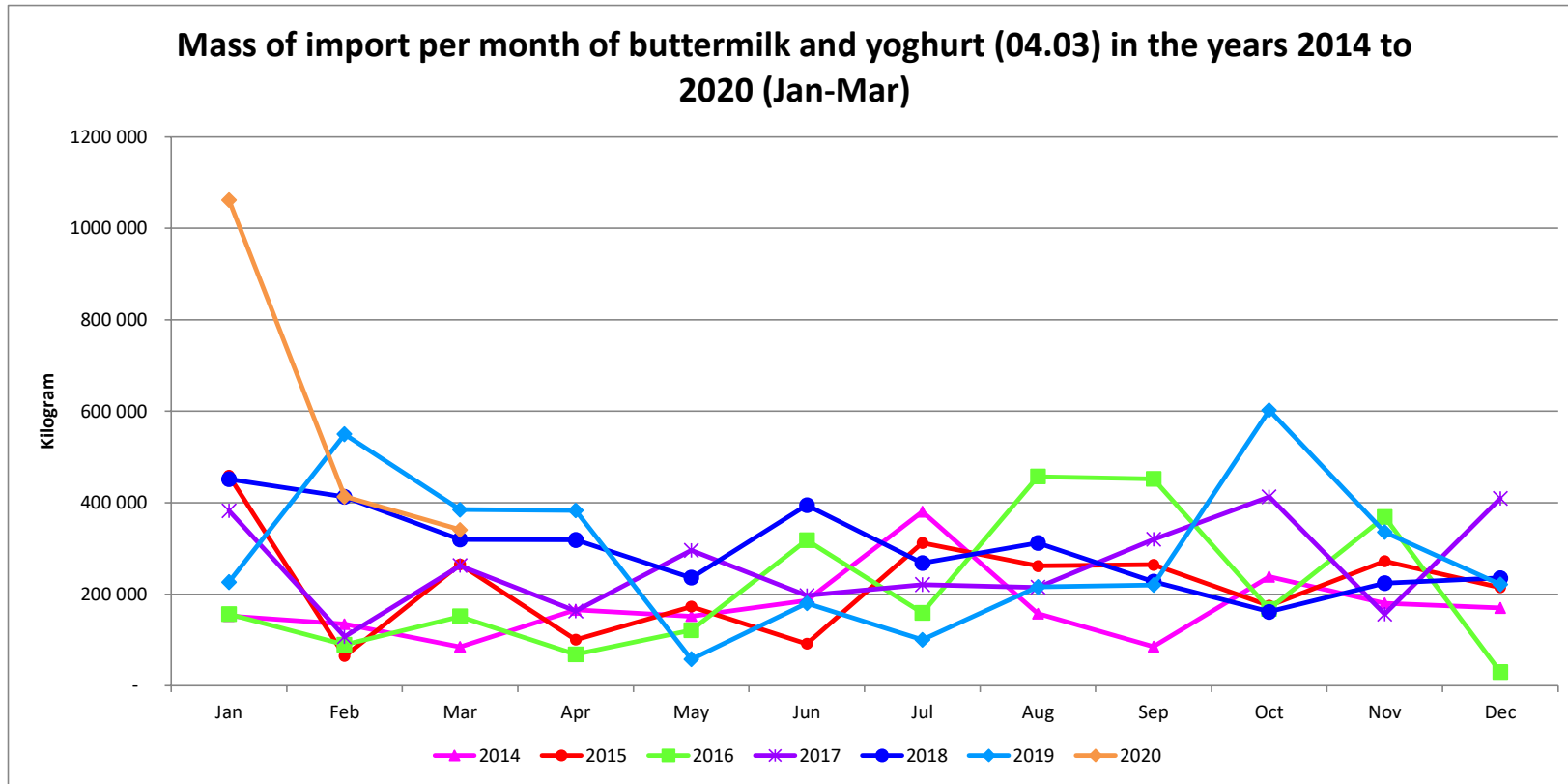


Table 3
Highest and lowest imports per month of buttermilk and yogurt (04.03) in the years 2014 to January to March 2020

	Highest	Lowest
2014	July	March
2015	January	February
2016	August	December
2017	October	February
2018	January	October
2019	October	May
2020 (Jan-Mar)	January	March

Graph 4

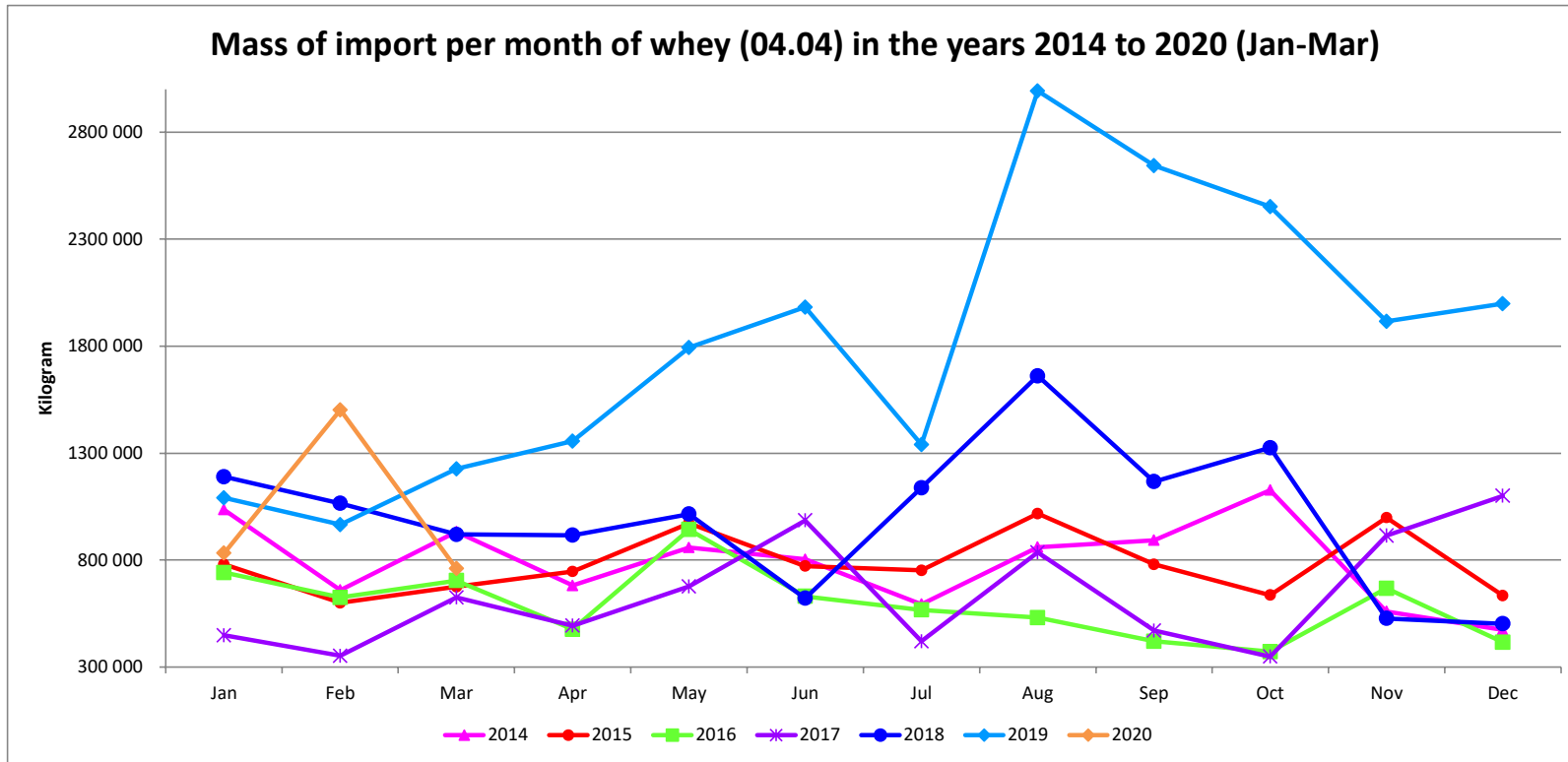


Table 4
Highest and lowest imports per month of whey (04.04) in the years 2014 to January to March 2020

	Highest	Lowest
2014	October	December
2015	August	February
2016	May	April
2017	December	October
2018	August	December
2019	August	February
2020 (Jan-Mar)	February	March

Graph 5

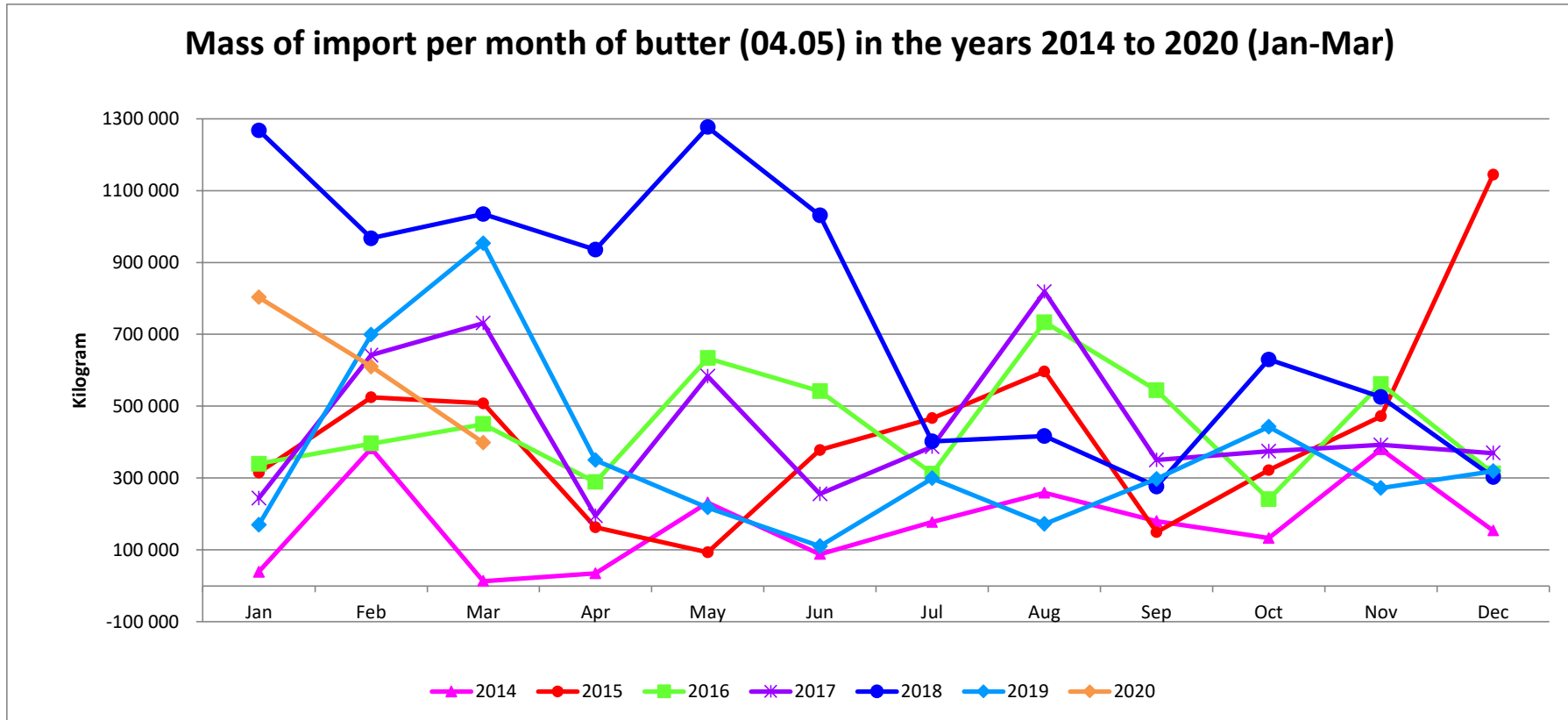


Table 5
Highest and lowest imports per month of butter (04.05) in the years 2014 to January to March 2020

	Highest	Lowest
2014	February	March
2015	December	May
2016	August	October
2017	August	April
2018	May	September
2019	March	June
2020 (Jan-Mar)	January	March

Graph 6

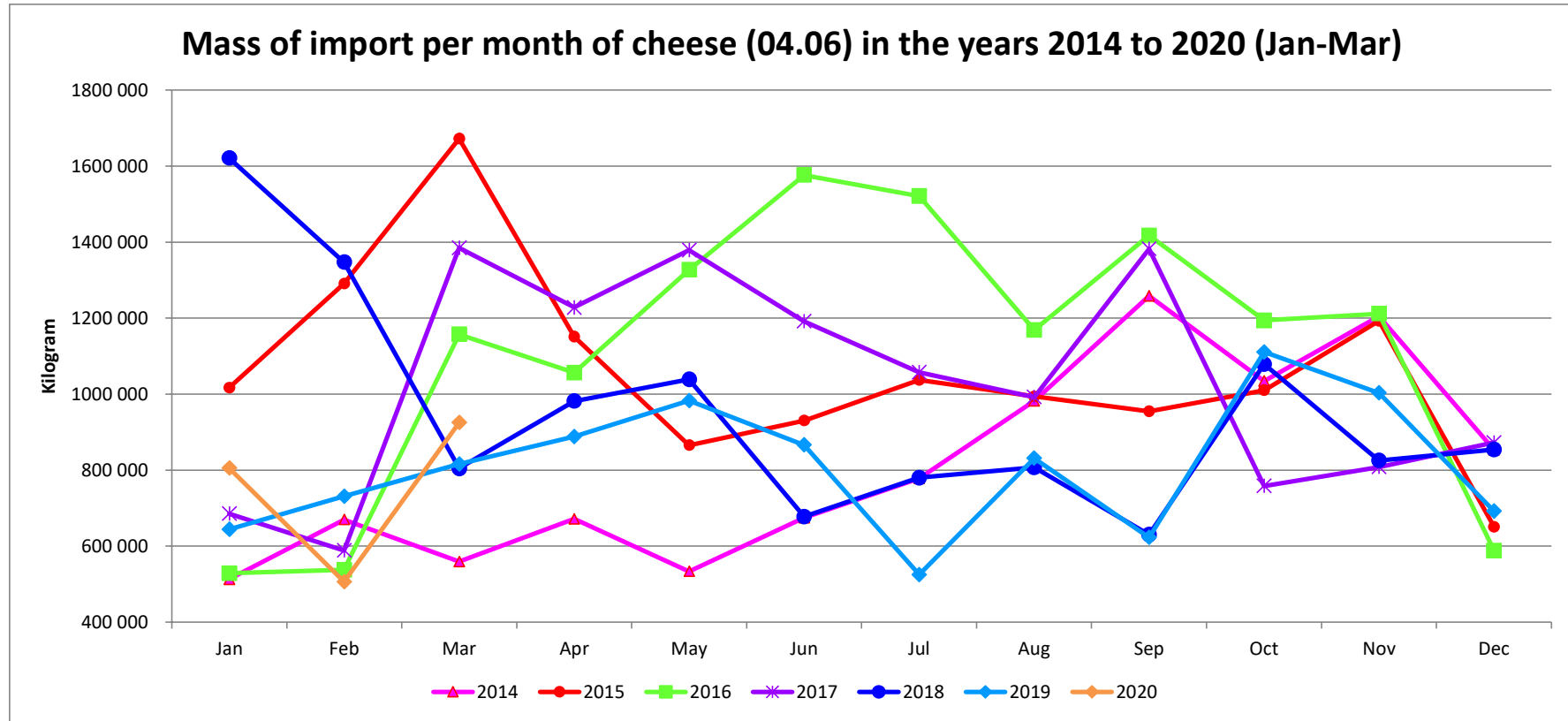


Table 6
Highest and lowest imports per month of cheese (04.06) in the years 2014 to January to March 2020

	Highest	Lowest
2014	September	January
2015	March	December
2016	June	January
2017	March	February
2018	January	September
2019	October	July
2020 (Jan-Mar)	March	February

Graph 7

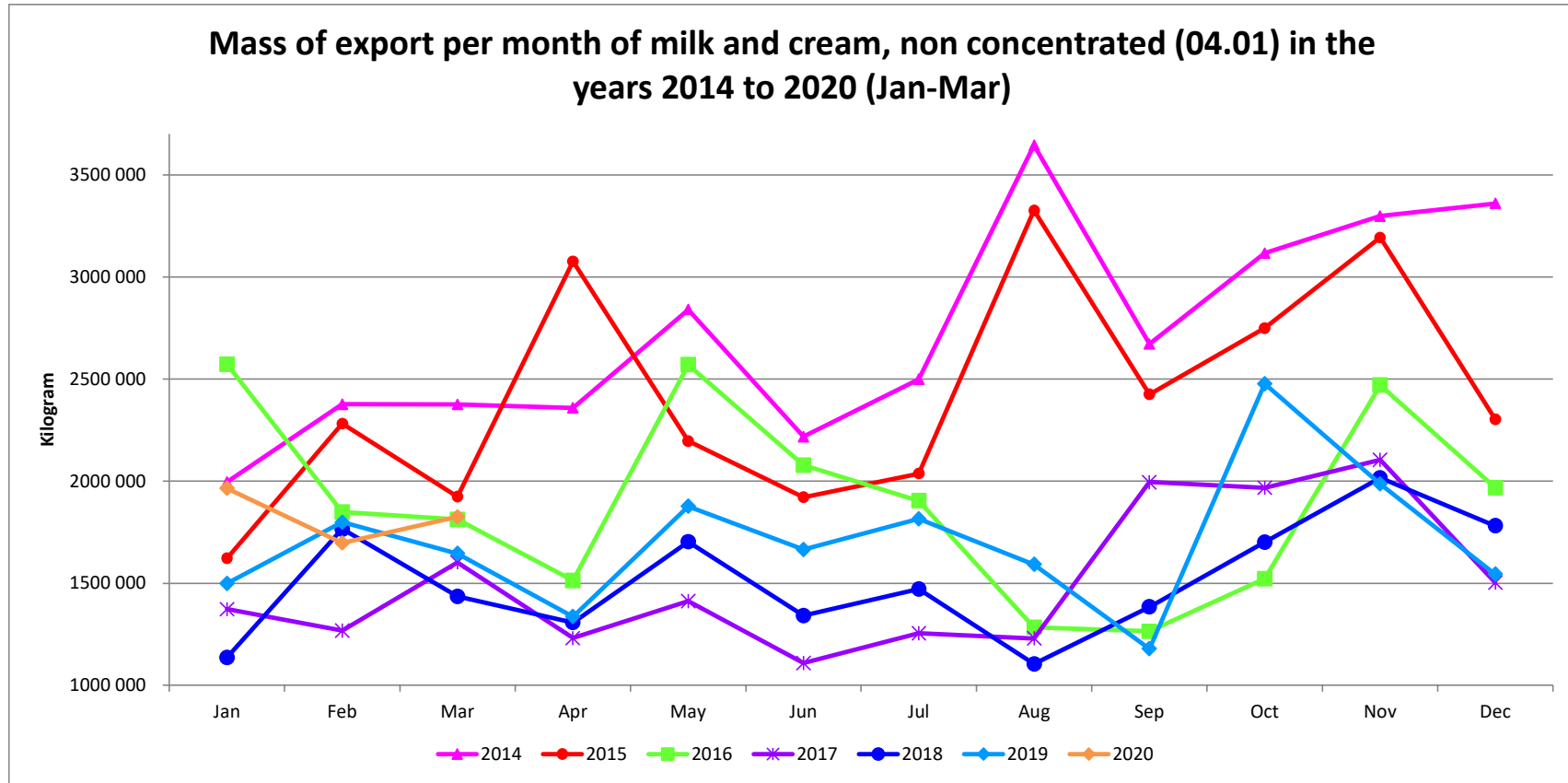


Table 7
Highest and lowest exports per month in terms of mass of milk and cream, non-concentrated (04.01) in the years 2014 to January to March 2020

	Highest	Lowest
2014	August	January
2015	August	January
2016	January	September
2017	November	June
2018	November	August
2019	October	September
2020 (Jan-Mar)	January	February

Graph 8

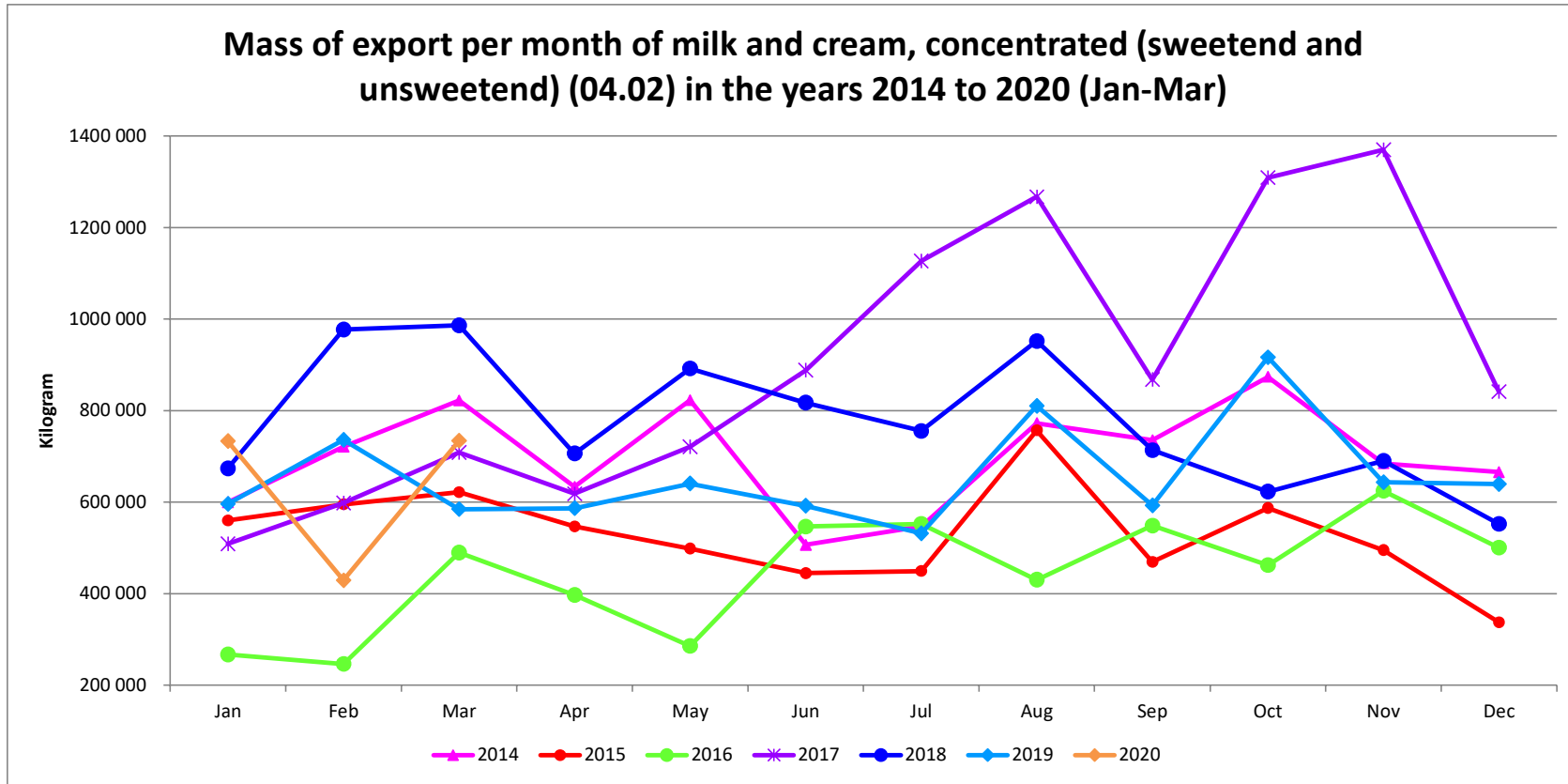


Table 8
Highest and lowest exports per month in terms of mass of milk and cream, concentrated (sweetend and unsweetend) (04.02) in the years 2014 to January to March 2020

	Highest	Lowest
2014	September	June
2015	August	December
2016	November	February
2017	November	January
2018	March	December
2019	October	July
2020 (Jan-Mar)	March	February

Graph 9

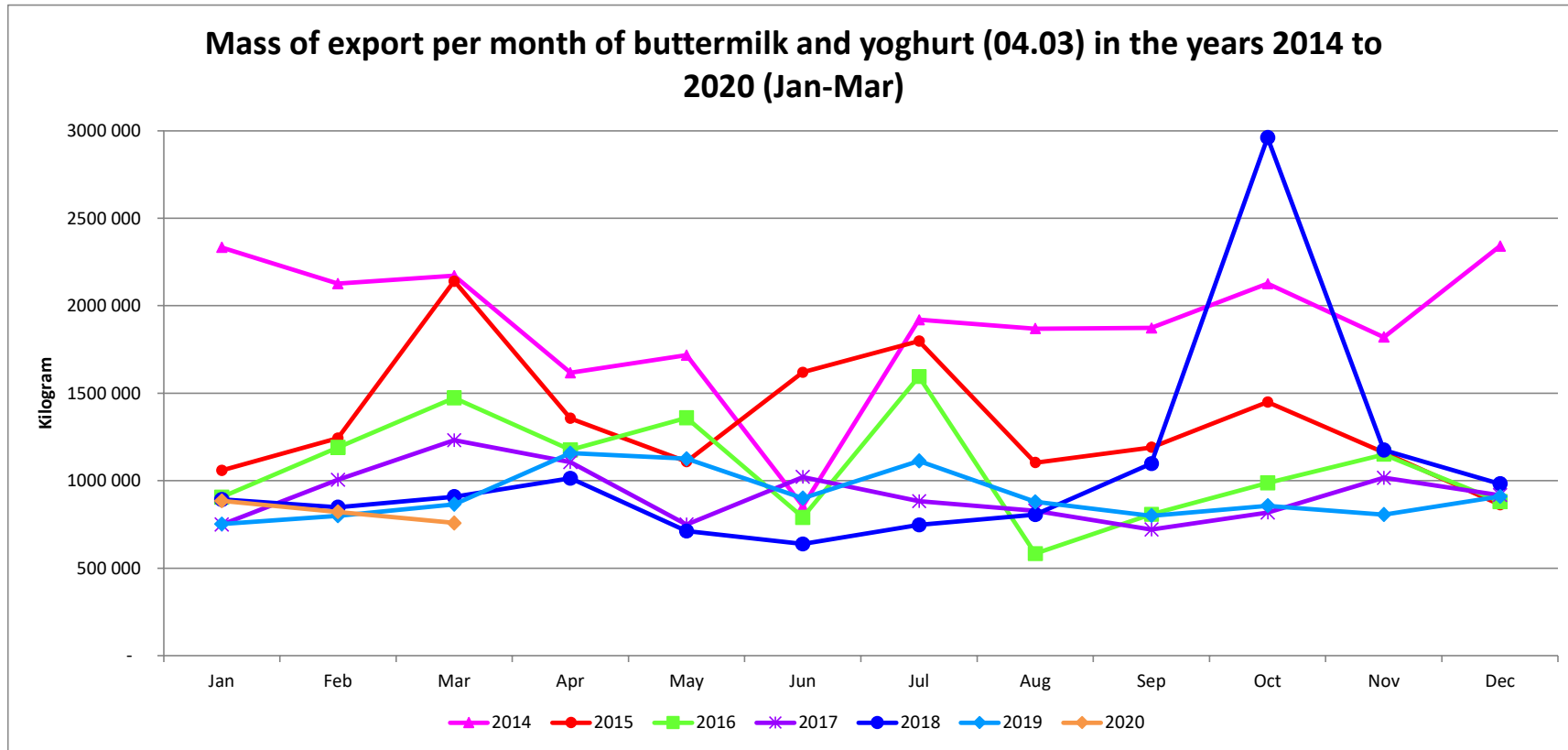


Table 9
Highest and lowest exports per month in terms of mass of buttermilk (04.03) in the years 2014 to January to March 2020

	Highest	Lowest
2014	December	June
2015	March	December
2016	July	August
2017	March	September
2018	October	June
2019	April	January
2020 (Jan-Mar)	January	March

Graph 10

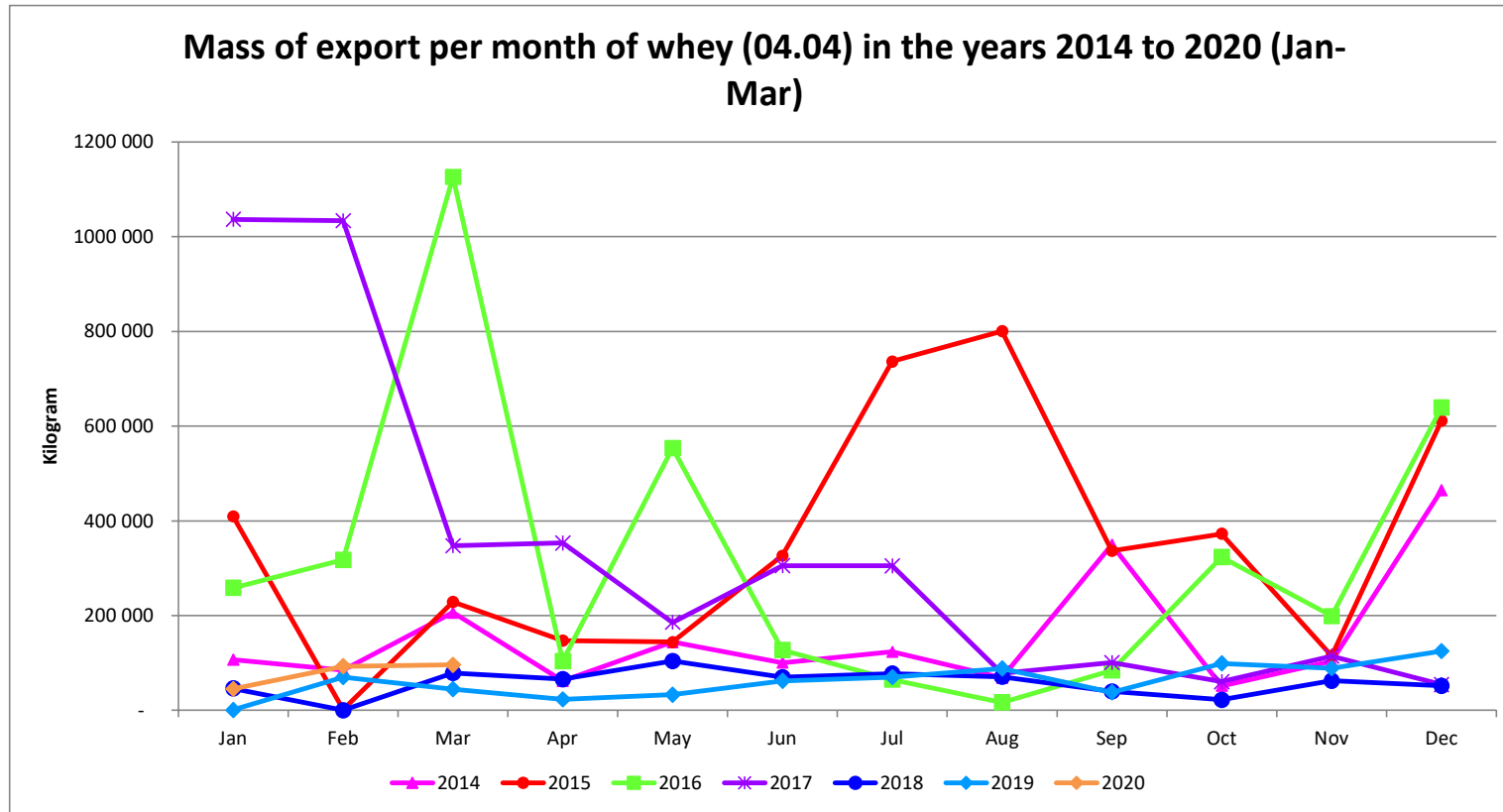


Table 10
Highest and lowest exports per month in terms of mass of whey (04.04) in the years 2014 to January to March 2020

	Highest	Lowest
2014	December	October
2015	August	February
2016	March	August
2017	January	December
2018	May	February
2019	December	January
2020 (Jan-Mar)	March	January

Graph 11

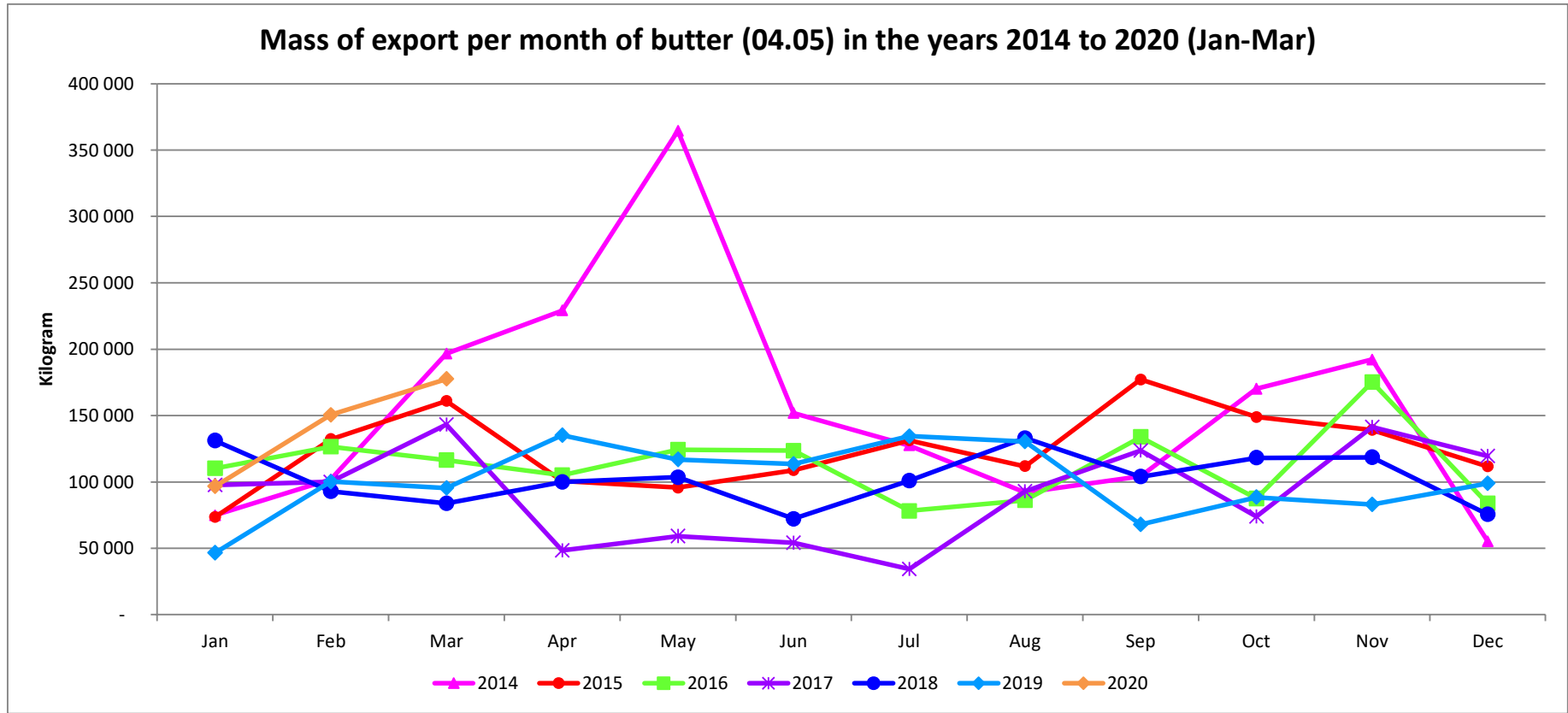


Table 11
Highest and lowest exports per month in terms of mass of butter (04.05) in the years 2014 to January to March 2020

	Highest	Lowest
2014	May	December
2015	September	January
2016	November	July
2017	March	July
2018	August	June
2019	April	January
2020 (Jan-Mar)	March	January

Graph 12

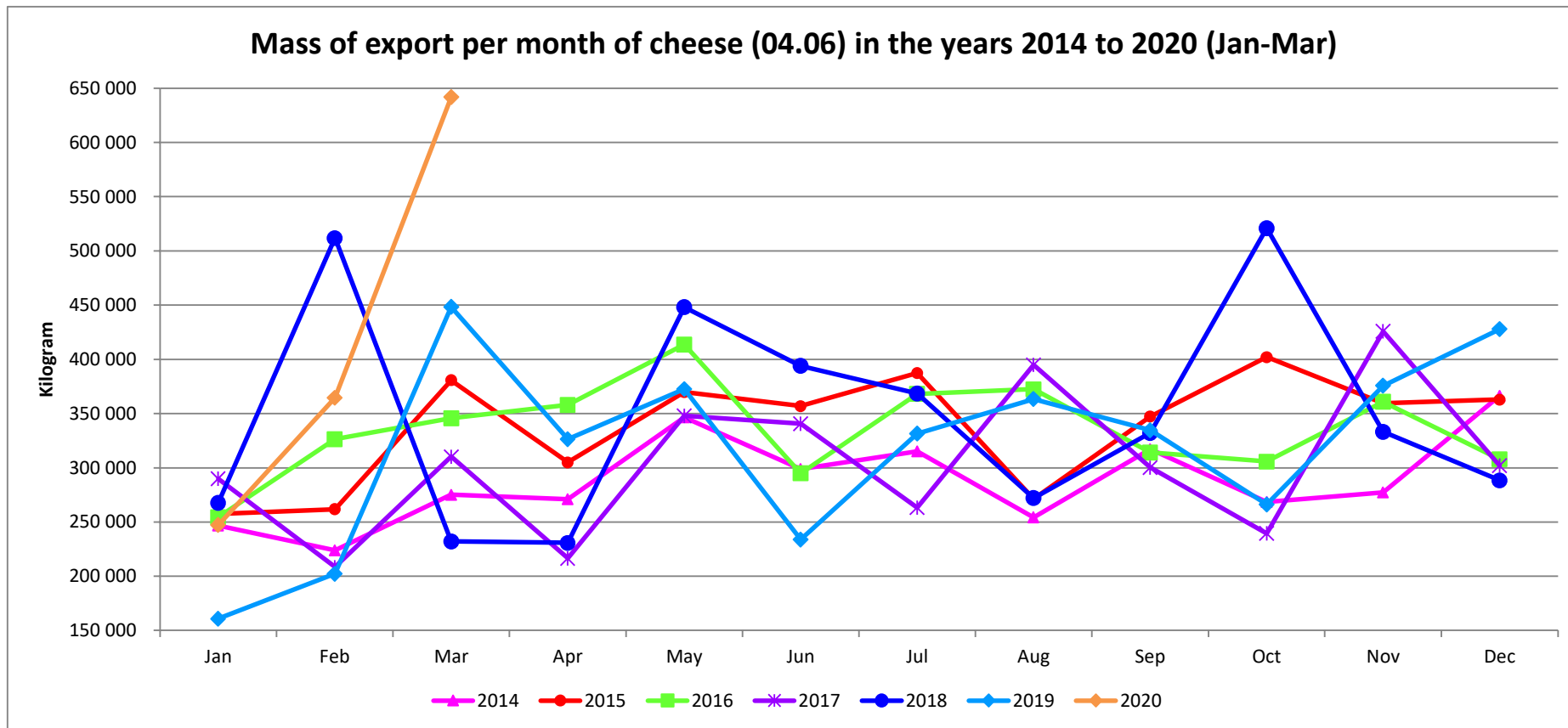


Table 12

Highest and lowest exports per month in terms of mass of cheese (04.06) in the years 2014 to January to March 2020

	Highest	Lowest
2014	December	February
2015	October	January
2016	May	January
2017	November	February
2018	October	April
2019	March	January
2020 (Jan-Mar)	March	January