

DAIRY DIGITS



MAY 2022

Dairy Digits is a Milk SA feature. It is also available on the Milk SA website: milksa.co.za.

Table 1 Key market indicators

Item	Period	Value	Percentage change (same period previous year)
Unprocessed milk purchased ('000 tonnes)	2020 ¹	3 427*	-0,16%
Unprocessed milk purchased ('000 tonnes) (Dec 21 estimate)	2021 ¹	3 403	-0,71%
Unprocessed milk purchased ('000 tonnes) estimate	Feb 22 ¹	235	-3,51%
Unprocessed milk purchased ('000 tonnes) estimate	Jan 22 ¹ –Feb 22 ¹	523	-0,68%
Dairy imports ('000 tonnes)	2021 ²	75,6	+24,8%
Dairy imports ('000 tonnes)	Jan 22 ² –Jan 22 ²	4,4	-6,4%
Dairy exports ('000 tonnes)	2021 ²	51,0	+9,2%
Dairy exports ('000 tonnes)	Jan 22 ² –Jan 22 ²	3,1	-34,0%
Dairy exports inclusive of sales to other SACU countries ('000 tonnes)	Jan 22 ⁵ –Jan 22 ⁵	15,0	-14,3%
Producer price index of unprocessed milk (base Dec 20 = 100) ³	Jan 22 ³	114,4	+7,3%
Farm requisite price index (base 2010 = 100) ⁴	Jul 21 ⁴	129,7	+4,2%
Producer price index of dairy products (base Dec 20 = 100) ³	Jan 22 ³	110,4	+8,2%

Source:

¹ Milk SA returns

² SARS statistics supplied by SAMPRO

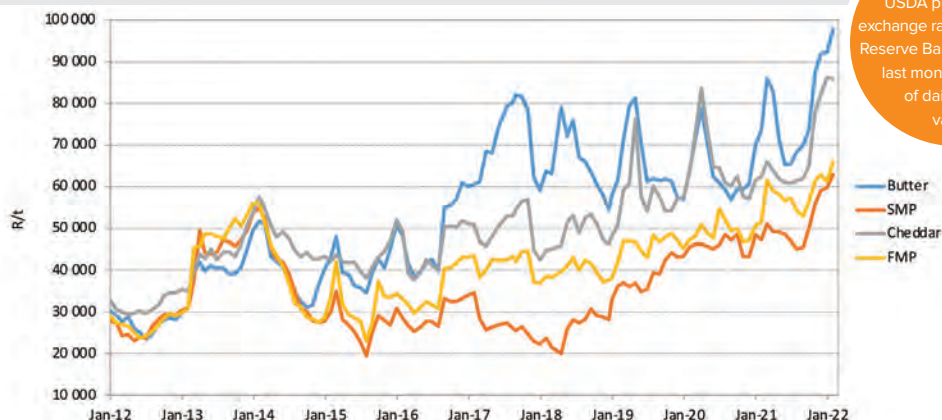
⁵ SARS statistics supplied by Agri Inspec

³ Stats SA PPI index

⁴ DALRRD price index of farm requisites

*Feb 2020 = 29 days

Figure 1 International dairy product prices (free on board), Jan 2012–Feb 2022



Source:

USDA price surveys, exchange rate South African Reserve Bank middle rates, last month – average of daily closing values.

Acronyms and abbreviations: consumer price index (CPI) • Department of Agriculture, Land Reform and Rural Development (DALRRD) • full-cream milk powder (FMP) • Milk Producers' Organisation (MPO) • Milk South Africa (Milk SA) • producer price index (PPI) • skimmed milk powder (SMP) • South African Customs Union (SACU) • South African Milk Processors' Organisation (SAMPRO) • South African Revenue Service (SARS) • Statistics South Africa (Stats SA) • ultra-high temperature (UHT) processed • United States Department of Agriculture (USDA)

Figure 2 Monthly unprocessed milk purchase trends, Jan 2019–Feb 2022

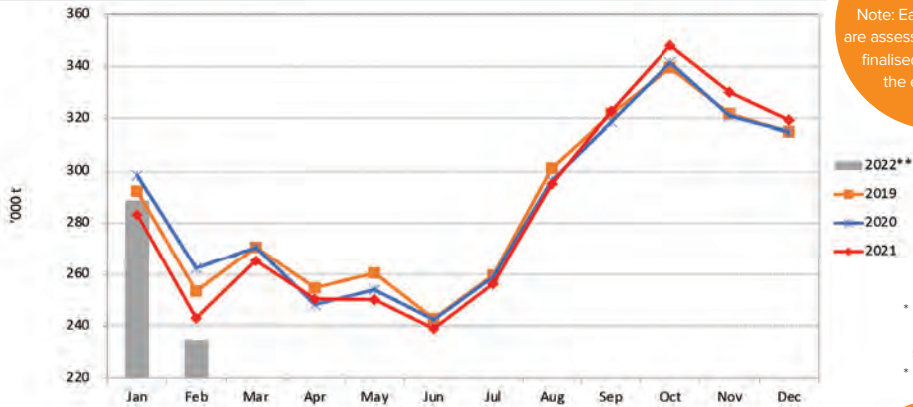


Figure 3 Monthly cumulative net imports, milk equivalent, Jan 2019–Jan 2022

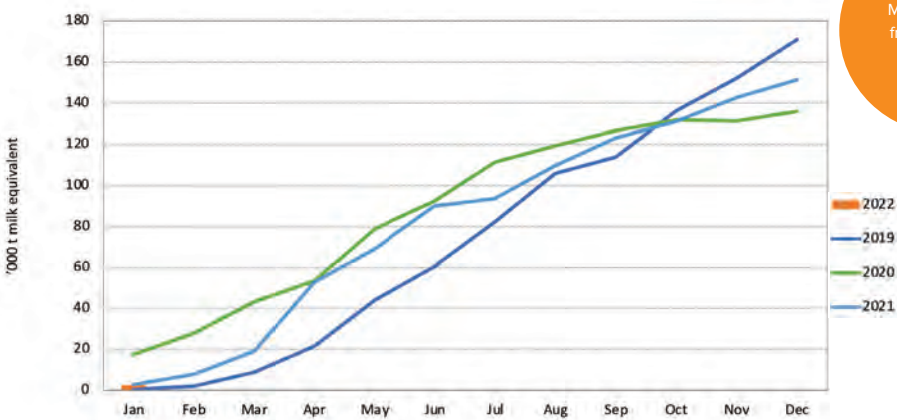
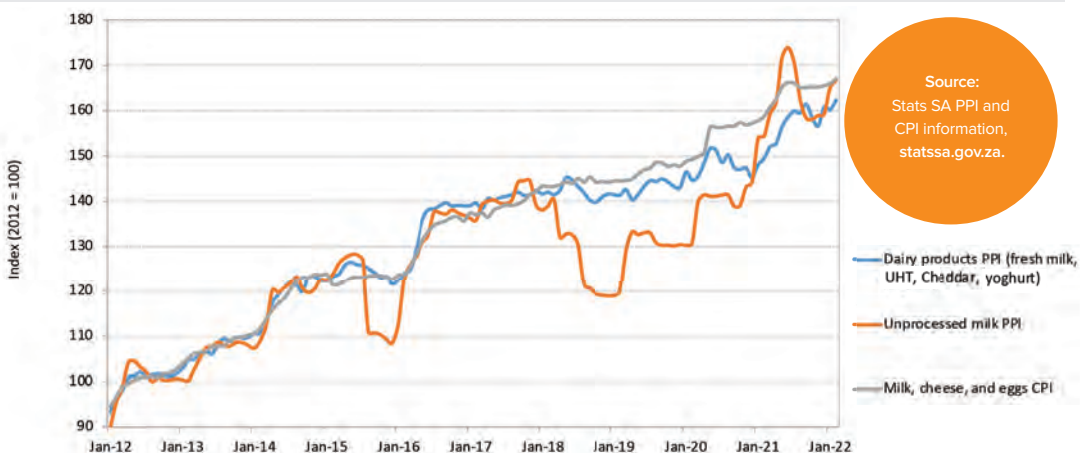


Figure 4 PPI indices of unprocessed milk and dairy products, and the CPI of milk, cheese, and eggs, Jan 2012–Feb 2022



This publication is compiled from sources that are deemed reliable. However, Milk SA and the contributors to the publication take no responsibility for the accuracy of the information. The information is, furthermore, intended to provide market signals only and Milk SA indemnifies itself against any actions based on this information.