

DAIRY DIGITS



FEBRUARY 2019

Dairy Digits is a Milk SA feature. It is also available on the Milk SA website: www.milk.co.za.

Table 1 Key market indicators

Item	Period	Value	Percentage change (same period previous year)
Milk purchased ('000 tonnes)	2016 ¹	3 158	-0,5%
Milk purchased ('000 tonnes)	2017 ¹	3 254	+3,0%
Milk purchased ('000 tonnes)	Nov 18 ¹	322	+1,12%
Milk purchased ('000 tonnes)	Jan 18 ¹ –Nov 18 ¹	3 069	+4,33%
Dairy imports ('000 tonnes)	2017 ²	83,5	+44,0%
Dairy imports ('000 tonnes)	Jan 18 ¹ –Sep 18 ¹	58,5	-8,46%
Dairy exports ('000 tonnes)	2017 ²	48,6	-3,2%
Dairy exports ('000 tonnes)	Jan 18 ¹ –Sep 18 ¹	31,2	-13,03%
Producer price index of unprocessed milk (base Dec 16 = 100) ³	Oct 18 ³	87,2	-17,5%
Farm requisite price index (base 2010 = 100) ⁴	Jul 18 ⁴	171,7	+4,6%
Producer price index of dairy products (base Dec 16 = 100) ³	Nov 18 ³	101,4	-0,4%

Source:

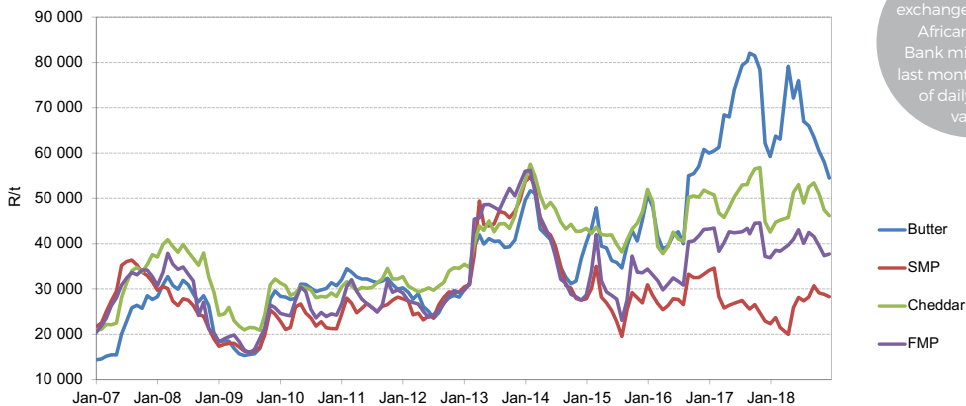
¹ Milk SA returns

² Sars statistics supplied by Sampro

³ Stats SA PPI index

⁴ Department of Agriculture, Forestry and Fisheries (DAFF) price index of farm requisites

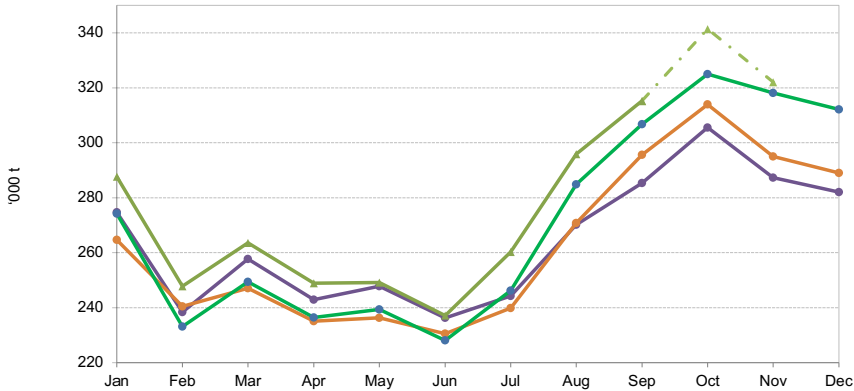
Figure 1 International dairy product prices (free on board), Jan 2007–Dec 2018



Source: USDA price surveys, exchange rate South African Reserve Bank middle rates, last month - average of daily closing values.

Acronyms and abbreviations: Milk South Africa (Milk SA) · Milk Producers' Organisation (MPO) · South African Milk Processors' Organisation (Sampro) · Statistics South Africa (Stats SA) · South African Revenue Service (Sars) · United States Department of Agriculture (USDA) · Producer price index (PPI) · Consumer price index (CPI) · Department of Agriculture, Forestry and Fisheries (DAFF) · Full-cream milk powder (FMP) · Skimmed milk powder (SMP)

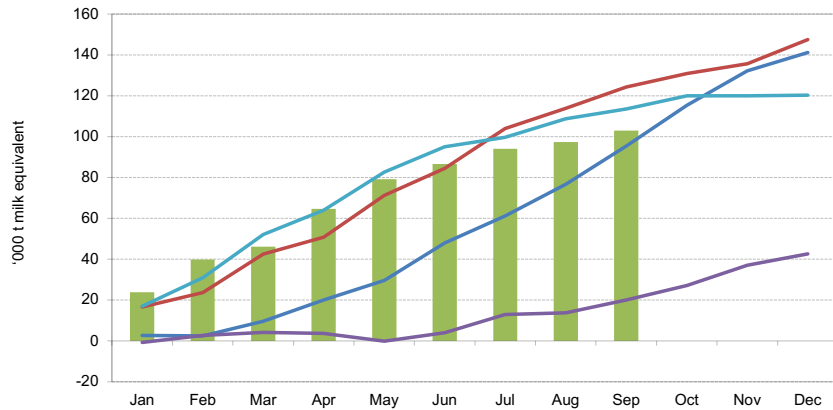
Figure 2 Monthly unprocessed milk purchase trends, Jan 2015–Nov 2018



Source: Milk SA statistics.
 Note: Jan 2015–Dec 2017 reviewed, based on total figures declared to Milk SA

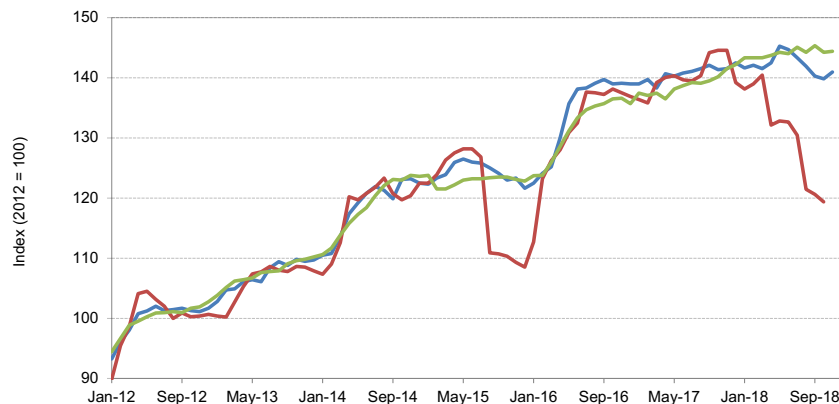
* Sample survey. Feb 2016 = 29 days.

Figure 3 Monthly cumulative net imports, milk equivalent, Jan 2014–Sep 2018



Source: MPO calculation from Sars data supplied by Sampro.

Figure 4 PPI indices of unprocessed milk and dairy products and the CPI of milk, cheese, and eggs, Jan 2012–Nov 2018



Source: Stats SA PPI and CPI information, www.statssa.gov.za.

This publication is compiled from sources that are deemed reliable. However, Milk SA and the contributors to the publication take no responsibility for the accuracy of the information. The information is furthermore intended to provide market signals only and Milk SA indemnifies itself against any actions based on this information.