

DAIRY DIGITS



MAY 2019

Dairy Digits is a Milk SA feature. It is also available on the Milk SA website: www.milk.co.za.

Table 1 Key market indicators

Item	Period	Value	Percentage change (same period previous year)
Milk purchased ('000 tonnes)	2017 ¹	3 254	+3,0%
Milk purchased ('000 tonnes)	2018 ¹	3 411	+4,8%
Milk purchased ('000 tonnes)	Feb 19 ¹	244	-3,45%
Milk purchased ('000 tonnes)	Jan 19 ¹ –Feb 19 ¹	535	-1,81%
Dairy imports ('000 tonnes)	2018 ²	68,7	-17,7%
Dairy imports ('000 tonnes)	Jan 19 ²	2,6	-75%
Dairy exports ('000 tonnes)	2018 ²	45,3	-6,8%
Dairy exports ('000 tonnes)	Jan 19 ²	3,06	-2,9%
Producer price index of unprocessed milk (base Dec 16 = 100) ³	Jan 19 ³	86,9	-13,8%
Farm requisite price index (base 2010 = 100) ⁴	Oct 18 ⁴	175,6	+4,0%
Producer price index of dairy products (base Dec 16 = 100) ³	Feb 19 ³	102,2	-0,5%

Source:

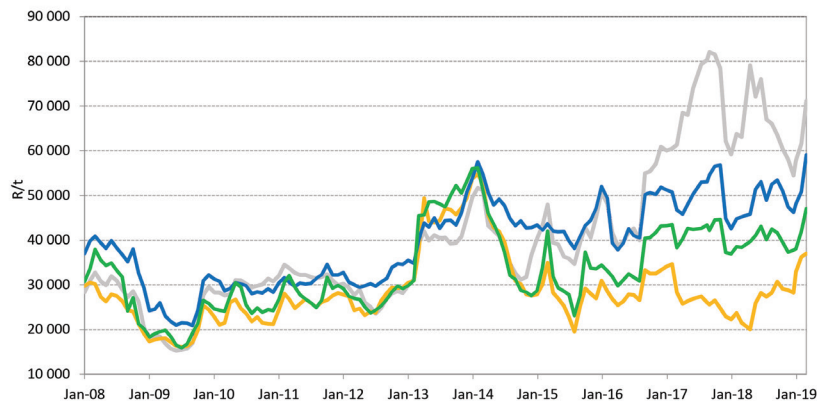
¹ Milk SA returns

² Sars statistics supplied by Sampro

³ Stats SA PPI index

⁴ Department of Agriculture, Forestry and Fisheries (DAFF) price index of farm requisites

Figure 1 International dairy product prices (free on board), Jan 2008–March 2019



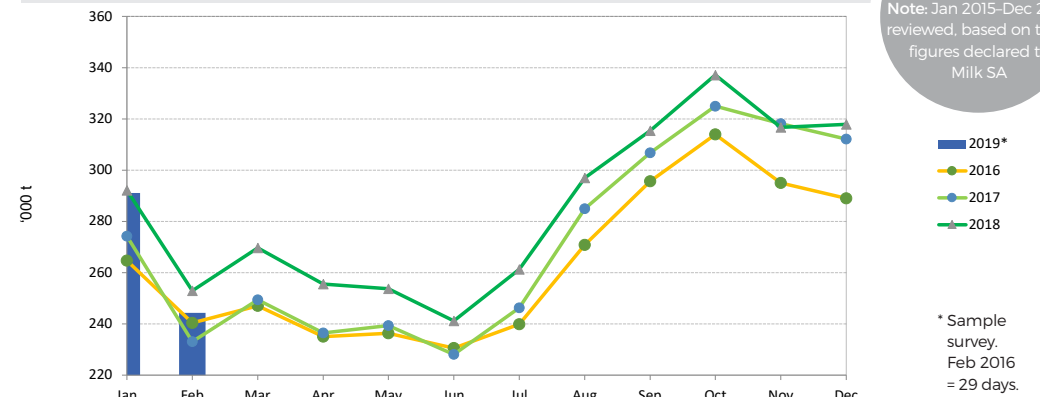
Source: USDA price surveys, exchange rate South African Reserve Bank middle rates, last month – average of daily closing values.

— Butter
— SMP
— Cheddar
— FMP

Acronyms and abbreviations: Milk South Africa (Milk SA) · Milk Producers' Organisation (MPO) · South African Milk Processors' Organisation (Sampro) · Statistics South Africa (Stats SA) · South African Revenue Service (Sars) · United States Department of Agriculture (USDA) · Producer price index (PPI) · Consumer price index (CPI) · Department of Agriculture, Forestry and Fisheries (DAFF) · Full-cream milk powder (FMP) · Skimmed milk powder (SMP)

DAIRY DIGITS

Figure 2 Monthly unprocessed milk purchase trends, Jan 2016–Feb 2019

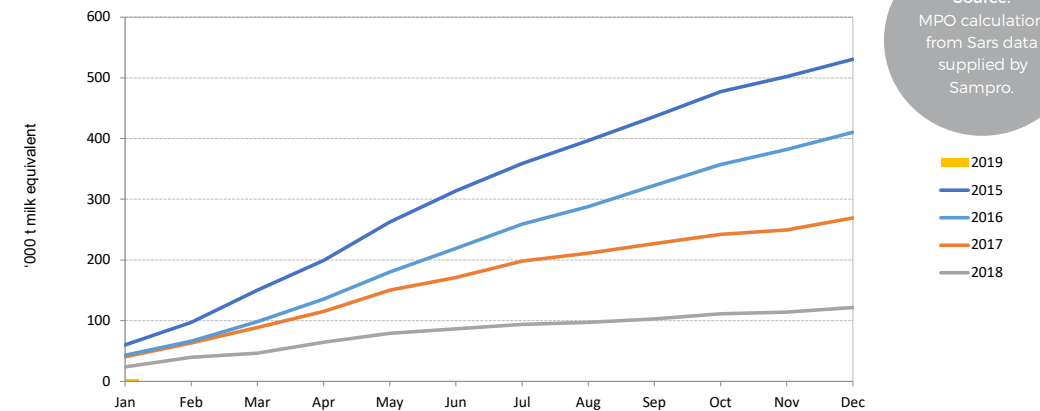


Source: Milk SA statistics. Note: Jan 2015–Dec 2018 reviewed, based on total figures declared to Milk SA

■ 2019*
● 2016
● 2017
● 2018

* Sample survey. Feb 2016 = 29 days.

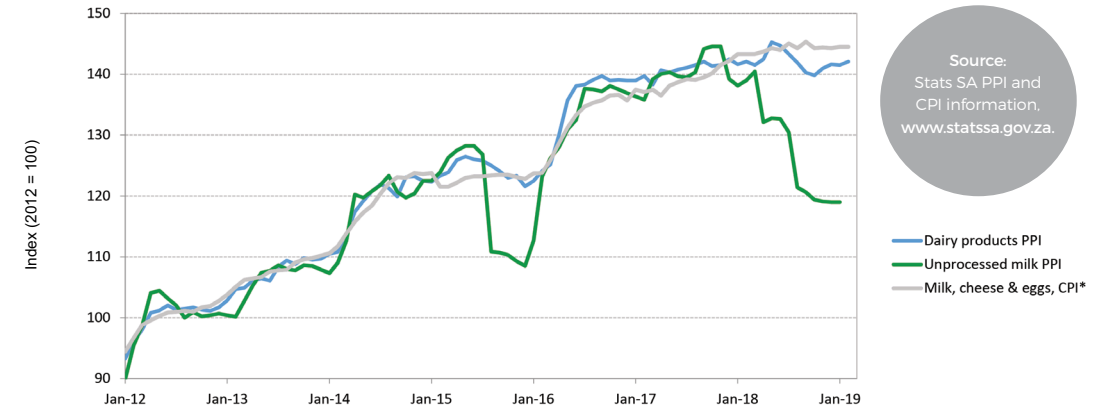
Figure 3 Monthly cumulative net imports, milk equivalent, Jan 2015–Jan 2019



Source: MPO calculation from Sars data supplied by Sampro.

■ 2019
■ 2015
■ 2016
■ 2017
■ 2018

Figure 4 PPI indices of unprocessed milk and dairy products, and the CPI of milk, cheese, and eggs, Jan 2012–Feb 2019



Source: Stats SA PPI and CPI information, www.statssa.gov.za.

— Dairy products PPI
— Unprocessed milk PPI
— Milk, cheese & eggs, CPI*

This publication is compiled from sources that are deemed reliable. However, Milk SA and the contributors to the publication take no responsibility for the accuracy of the information. The information is furthermore intended to provide market signals only and Milk SA indemnifies itself against any actions based on this information.