

# DAIRY DIGITS



**OCTOBER** 2019

Dairy Digits is a Milk SA feature. It is also available on the Milk SA website: [www.milk.co.za](http://www.milk.co.za).

**Table 1** Key market indicators

Item	Period	Value	Percentage change (same period previous year)
Unprocessed milk purchased ('000 tonnes)	2017 <sup>1</sup>	3 254	+3,0%
Unprocessed milk purchased ('000 tonnes)	2018 <sup>1</sup>	3 411	+4,8%
Unprocessed milk purchased ('000 tonnes)	Jul 19 <sup>1</sup>	260	-0,46%
Unprocessed milk purchased ('000 tonnes) estimate	Jan 19 <sup>1</sup> –Jul 19 <sup>1</sup>	1 824	-0,13%
Dairy imports ('000 tonnes)	2018 <sup>2</sup>	68,7	-17,7%
Dairy imports ('000 tonnes)	Jan 19 <sup>2</sup> –Jun 19 <sup>2</sup>	33,3	-28,9%
Dairy exports ('000 tonnes)	2018 <sup>2</sup>	45,3	-6,8%
Dairy exports ('000 tonnes)	Jan 19 <sup>2</sup> –Jun 19 <sup>2</sup>	21,7	+4,8%
Producer price index of unprocessed milk (base Dec 16 = 100) <sup>3</sup>	Jul 19 <sup>3</sup>	97,2	+1,6%
Farm requisite price index (base 2010 = 100) <sup>4</sup>	Jan 19 <sup>4</sup>	171,9	+3,6%
Producer price index of dairy products (base Dec 16 = 100) <sup>3</sup>	Jul 19 <sup>3</sup>	104	+0,9%

Source:

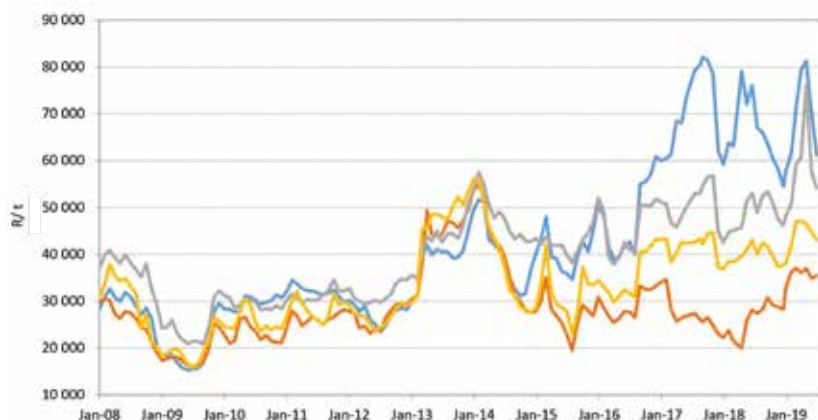
<sup>1</sup> Milk SA returns

<sup>2</sup> SARS statistics supplied by SAMPRO

<sup>3</sup> Stats SA PPI index

<sup>4</sup> Department of Agriculture, Land Reform and Rural Development (DALRRD) price index of farm requisites

**Figure 1** International dairy product prices (free on board), Jan 2008–Jul 2019

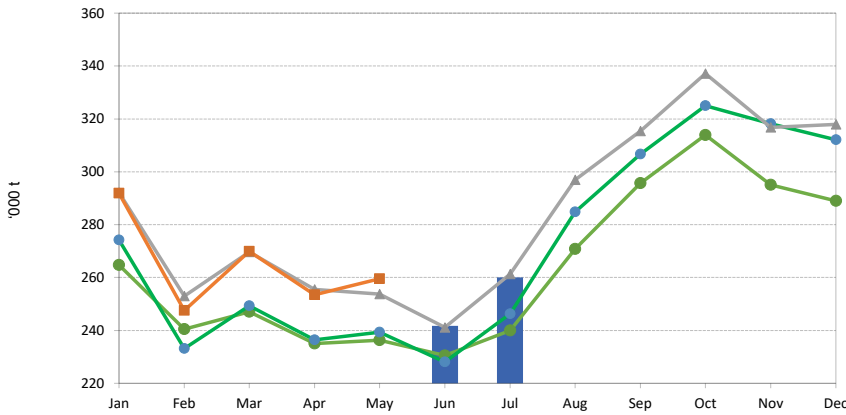


Source:  
 USDA price surveys,  
 exchange rate South African  
 Reserve  
 Bank middle rates,  
 last month – average of  
 daily closing values.

— Butter  
 — SMP  
 — Cheddar  
 — FMP

**Acronyms and abbreviations:** Milk South Africa (Milk SA) • Milk Producers' Organisation (MPO) • South African Milk Processors' Organisation (SAMPRO) • Statistics South Africa (Stats SA) • South African Revenue Service (SARS) • United States Department of Agriculture (USDA) • Producer price index (PPI) • Consumer price index (CPI) • Department of Agriculture, Land Reform and Rural Development (DALRRD) • Full-cream milk powder (FMP) • Skimmed milk powder (SMP)

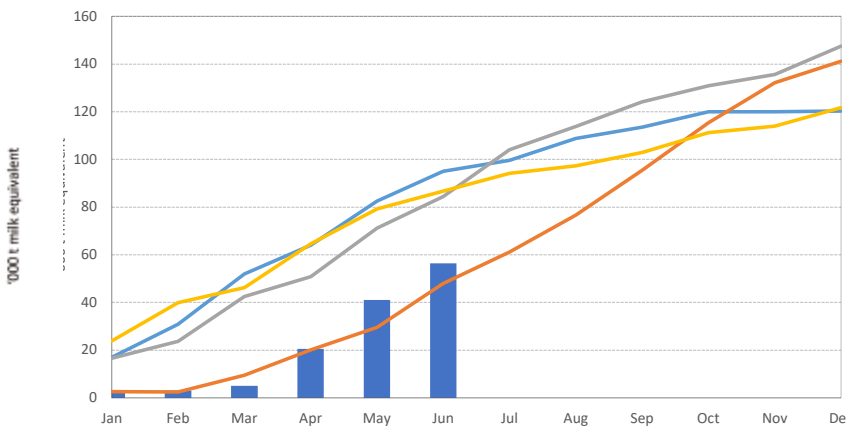
**Figure 2** Monthly unprocessed milk purchase trends, Jan 2016–Jul 2019



Source: Milk SA statistics. Note: Jan 2016–Dec 2018 reviewed, based on total figures declared to Milk SA

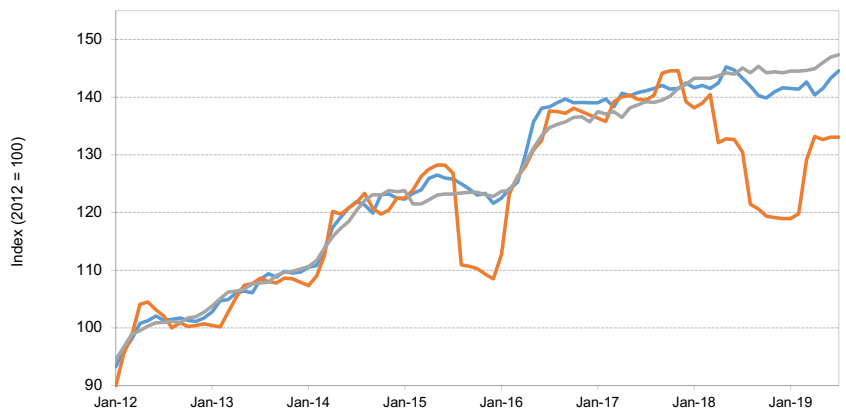
\* Sample survey; preliminary Feb 2016 = 29 days.

**Figure 3** Monthly cumulative net imports, milk equivalent, Jan 2015–Jun 2019



Source: MPO calculation from SARS data supplied by SAMPRO.

**Figure 4** PPI indices of unprocessed milk and dairy products, and the CPI of milk, cheese, and eggs, Jan 2012–Jul 2019



Source: Stats SA PPI and CPI information, www.statssa.gov.za.

This publication is compiled from sources that are deemed reliable. However, Milk SA and the contributors to the publication take no responsibility for the accuracy of the information. The information, is furthermore, intended to provide market signals only and Milk SA indemnifies itself against any actions based on this information.